

HALL - 2,3,4 & 5 (GROUND FLOOR)



DETAIL OF COLUMN

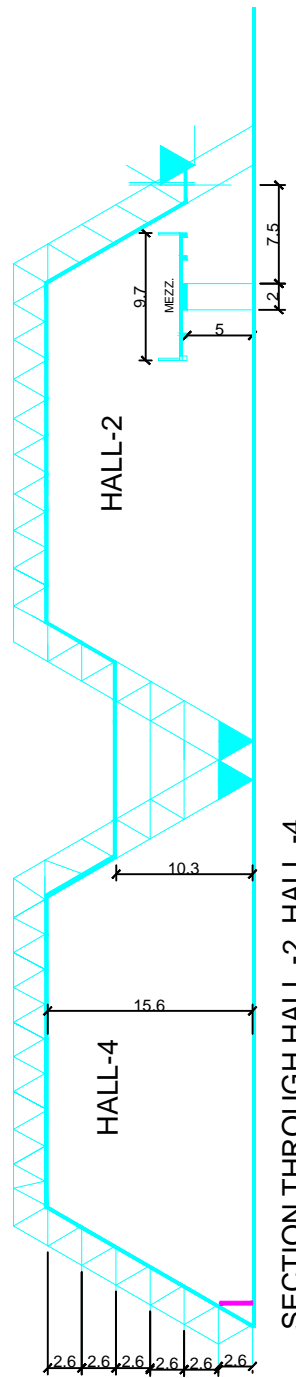
HALL 2	= 1360.00 SQ.M.
HALL 3	= 1445.00 SQ.M.
HALL 4	= 1605.00 SQ.M.
HALL 5	= 1365.00 SQ.M.
HALL 2 MEZZANINE	= 511.90 SQ.M.
HALL 5 MEZZANINE	= 511.90 SQ.M.
TOTAL	= 6798.80 SQ.M.

LEGEND

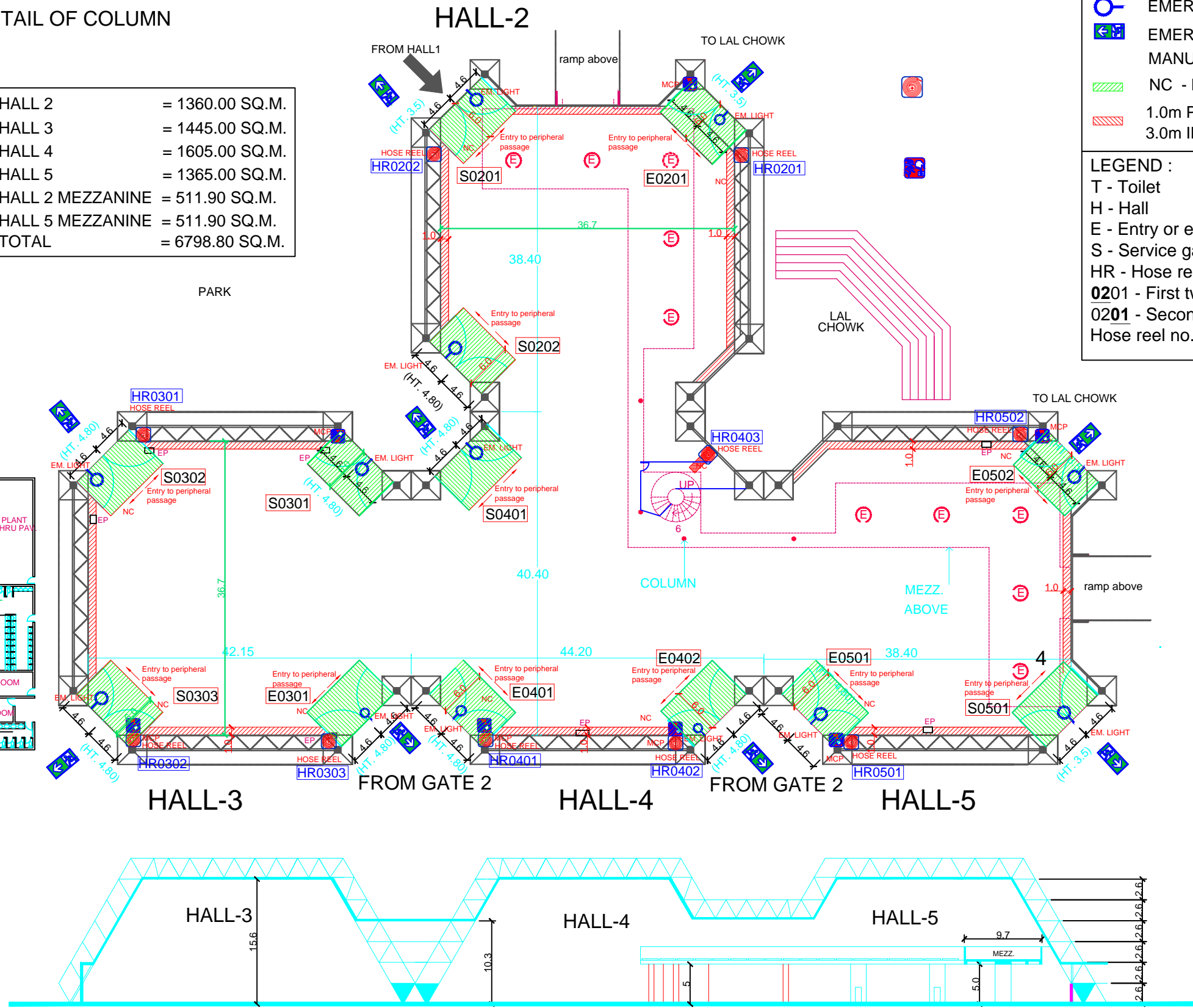
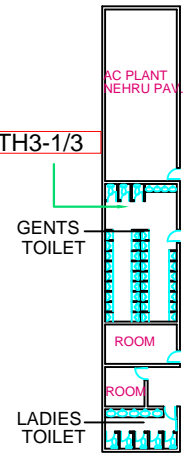
- ELECTRICAL PANEL(1.0m passage)
- HOSE REEL(1.0 m passage)
- EMERGENCY LIGHT
- EMERGENCY EXIT(blockage free)
- MANUAL CALL POINT(1.0 m passage)
- NC - NO CONSTRUCTION ZONE
- 1.0m PASSAGE TO BE LEFT ALLAROUND
3.0m IN FRONT OF ALL ENTRY/ EXIT

LEGEND :

- T - Toilet
- H - Hall
- E - Entry or exit gates
- S - Service gates
- HR - Hose reel
- 0201 - First two digits indicates Hall no.
- 0201 - Second two digits indicates Toilet no. or Hose reel no. or entry gate no. or service gate no.



SECTION THROUGH HALL -2, HALL -4



SECTION THROUGH HALL -3, HALL -4, HALL -5

