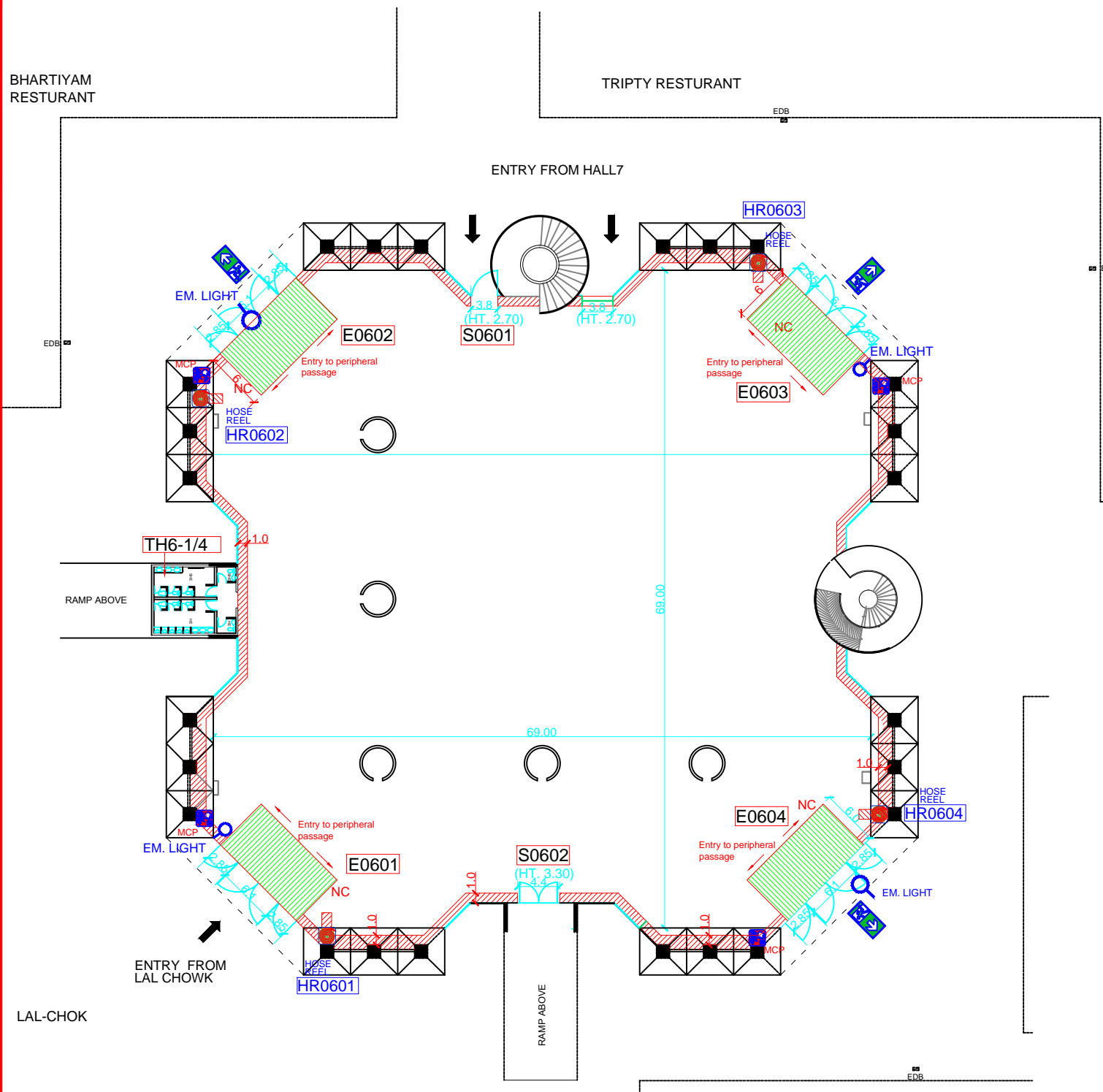


# HALL - 6

## GROUND FLOOR

HALL 6 GROUND = 4415.34 SQ.M.  
 HALL 6 MEZZANINE = 1500.74 SQ.M.  
 TOTAL AREA = 5916.08 SQ.M.



- LEGEND .....**
- ELECTRICAL PANEL(1.0m passage)
  - HOSE REEL(1.0 m passage)
  - EMERGENCY LIGHT
  - EMERGENCY EXIT(blockage free)
  - MANUAL CALL POINT(1.0 m passage)
  - NC - NO CONSTRUCTION ZONE  
6.0m IN FRONT OF ALL ENTRY/ EXIT
  - 1.0m PASSAGE TO BE LEFT ALLAROUND
- LEGEND :**
- T - Toilet
  - H - Hall
  - E - Entry or exit gates
  - S - Service gates
  - HR - Hose reel
- 0601** - First two digits indicates Hall no.  
**0601** - Second two digits indicates Toilet no. or Hose reel no. or entry gate no. or service gate no.

