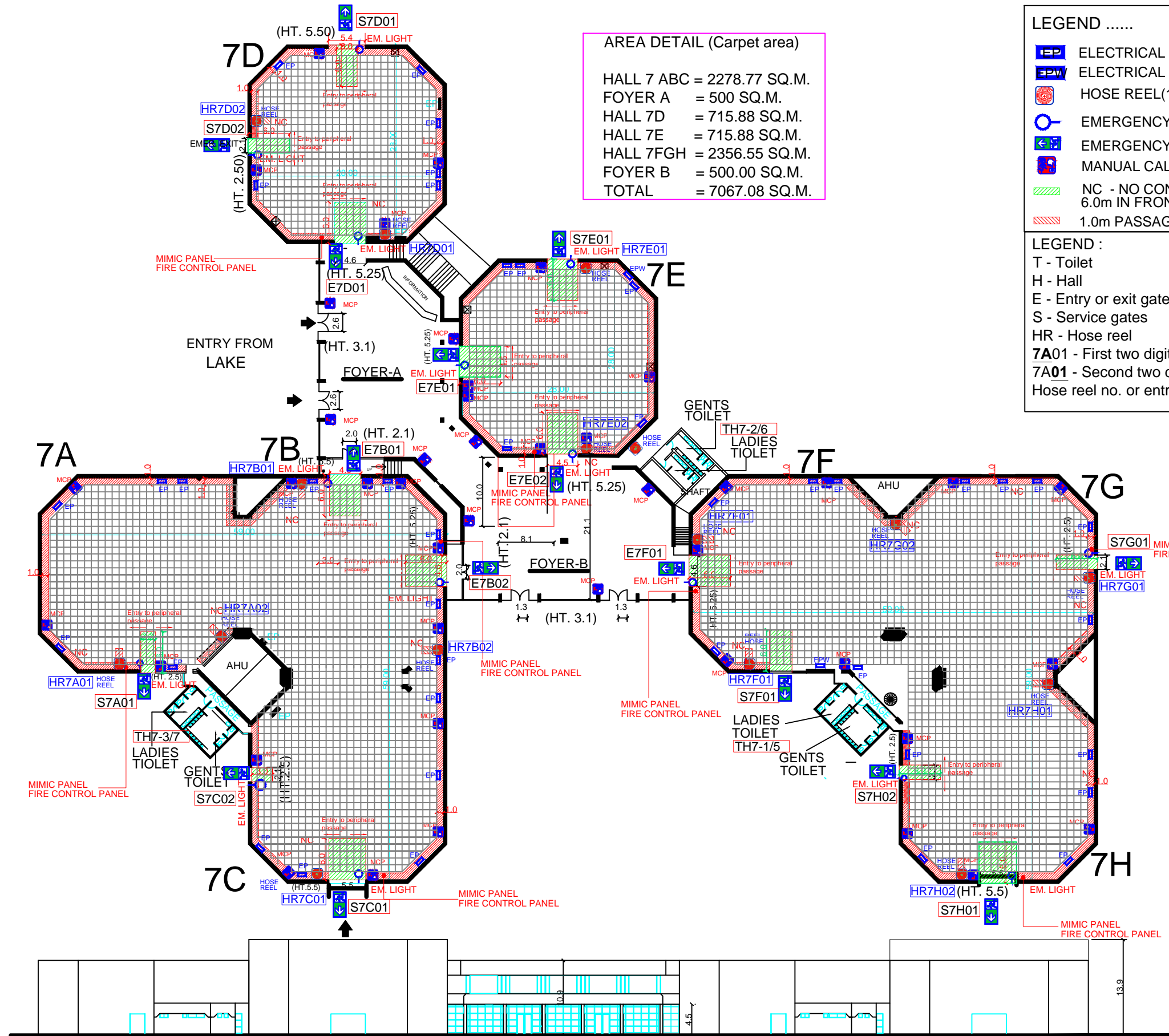


# HALL-7 A-H GROUND FLOOR

LAKE SIDE ELEVATION



**AREA DETAIL (Carpet area)**

HALL 7 ABC = 2278.77 SQ.M.  
 FOYER A = 500 SQ.M.  
 HALL 7D = 715.88 SQ.M.  
 HALL 7E = 715.88 SQ.M.  
 HALL 7FGH = 2356.55 SQ.M.  
 FOYER B = 500.00 SQ.M.  
 TOTAL = 7067.08 SQ.M.

**LEGEND .....**

- ELECTRICAL PANEL(Floor mounted)
- ELECTRICAL PANEL(Wall mounted)
- HOSE REEL(1x3 m passage)
- EMERGENCY LIGHT
- EMERGENCY EXIT(blockage free)
- MANUAL CALL POINT(1.0 m passage)
- NC - NO CONSTRUCTION ZONE  
6.0m IN FRONT OF ALL ENTRY/ EXIT
- 1.0m PASSAGE TO BE LEFT ALLAROUND

**LEGEND :**

- T - Toilet
- H - Hall
- E - Entry or exit gates
- S - Service gates
- HR - Hose reel
- 7A01 - First two digits indicates Hall no.
- 7A01 - Second two digits indicates Toilet no. or Hose reel no. or entry gate no. or service gate no.

SIDE ELEVATION